



50-778

Performance Plus Cutting Tips

Our newest and overall best performing cutting tips. Low chance of chatter, smooth finishes, and longer tip life. 6 tips with screws ship with all new lathes.



50-3746

Pro-Cut HD Cutting Tips

Premium carbide cutting tip offers custom geometry, chip breaker, and positive relief. 10 tips with screws for the 50-3330 cutting head.



37-740

T-8 Cutting tip flag wrench



37-3749

T-15 Cutting tip flag wrench



50-1347

Reach Extension Plate

Extends the cutting head reach when using taller adapters with the X1 HD.



37-3501

Magnetic Light

Work light with magnetic base to increase visibility in dimly lit work spaces.



50-4752

Lathe Cover

Protects your investment against shop dust, debris, and moisture.



50-376

Slide Oil

Keep your lathe's gib ways running smoother for longer with this special slide oil. Works great for all Pro-Cut lathes!



37-3502

Thickness Gauge

This spring loaded thickness gauge allows you to quickly assess a disc before machining.



50-3960

25mm Thick Spacer

For spacing adapters off of the hub.



50-3961

8mm Thick Spacer

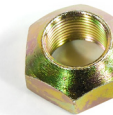
For spacing adapters off of the hub.



50-963

Conical Spacers

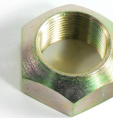
Centers the adapter on the studs and allows use of the 36-3403 nuts or the flat side of the 50-986 or 50-987 nuts seen below.



50-986

M20 Nuts

Pro-Cut conical nuts center the adapter over the studs.



50-987

M22 Nuts

Pro-Cut conical nuts center the adapter over the studs.



36-3403

M22 Nuts

A flat edge nut to use with the 50-963 centering spacer.



50-773

Green Large Rotor Chip Deflector

Chip deflector for 1299 series cutting heads. Stronger spring and thick blocks with contours designed to fit 1299 cutting head securely.



50-2703

Universal Chip Deflector

For use on standard size vented rotors. Custom-cut to ride securely over all Pro-Cut cutting heads.



50-744

Large Rotor Chip Deflector

For use on larger vented rotors up through medium duty trucks. Custom-cut to ride securely over the Pro-Cut 50-2480 cutting heads.



37-1900
Safety glasses



35-268
Eight M10 x 30mm bolts that secure the adapter to the X1 HD.



37-3990
Stud and hub cleaning abrasives combined in one easy to replace insert



37-3991
Abrasive tool replacement insert.



50-3955
1-Ton Dual Wheel Truck Adapter
Fits Ford F450/550, GM 3500, RAM 4500/5500"
Has the following patterns: 8 on 200mm, 8 on 210mm, 8 on 225mm and 10 on 225mm.



50-3999
8 x 275mm, and 10 x 11.25" Pattern
For GM 4500/5500, Ford F650/750, Most school buses, and OTR tractors like Peterbilt, Kenworth, International etc, and trailers by most manufacturers.



50-3989
10x335mm Pattern
For larger transit and charter buses, some fire trucks, and other specialty heavy vehicles.

