



# HYUNDAI Technical Service Bulletin

Group	BRAKES
Number	10-BR-001
Date	OCTOBER, 2010
Model	ALL

Subject	<b>BRAKE SERVICE BEST PRACTICES RECOMMENDATIONS</b>
---------	---

<b>CIRCULATE TO:</b>	<input type="checkbox"/> GENERAL MANAGER	<input checked="" type="checkbox"/> PARTS MANAGER	<input checked="" type="checkbox"/> TECHNICIAN
<input checked="" type="checkbox"/> SERVICE ADVISOR	<input checked="" type="checkbox"/> SERVICE MANAGER	<input checked="" type="checkbox"/> WARRANTY MGR	<input type="checkbox"/> SALES MANAGER

***This TSB supercedes 10-SS-005 to include grease recommendations and brake service best practices.***


**DESCRIPTION:**

This bulletin provides best practice recommendations for performing any brake service.

**APPLICABLE VEHICLES:**

All models

**TOOLS RECOMMENDED:**

TOOL	FIGURE	REMARK
On-car brake lathe		<p>PFM 9.0 or higher version made by PRO-CUT is the recommended model.</p> <p>SPX Part Number is: <b>38-PFM90.5</b> for PFM 9.0 Brake Lathe with five adapters.</p> <p>Tool is available through the Hyundai Dealer Equipment Program telephone number: <b>1-866-539-4248</b></p>

**PARTS RECOMMENDED:**

PART	FIGURE	REMARK
Brake cleaner		P/N: 00232-19009
Brake caliper grease		<p>CRC Brake Caliper Grease is recommended on every brake service job for use on:</p> <ul style="list-style-type: none"> <li>- Caliper sliding pins</li> <li>- Brake pad backing plates</li> <li>- Brake pad ears</li> </ul> <p>This grease or similar is available at any local automotive parts store.</p>



# HYUNDAI Technical Service Bulletin

Group	BRAKES
Number	10-BR-001

## SERVICE PROCEDURE RECOMMENDATIONS:

### BRAKE ROTOR RESURFACING

**NOTE:** Always follow the brake lathe manufacturer's recommendations for proper machining.

**NOTE:** It is recommended to use an "on-car" brake lathe.

**NOTE:** For more information on brake disc service, refer to the applicable vehicle shop manual.

- When measuring the brake disc for minimum service thickness and run-out, be sure to remove all surface contamination and corrosion. This will ensure an accurate measurement.
- **Measure the disc thickness at 8 points** (every 45 degrees). Measure at the same distance (~5mm/0.2") inboard of the outer edge of the disc. Record these measurements on the repair order sheet.

**IMPORTANT:** Measure the rotor thickness **BEFORE** and **AFTER** machining to ensure the disc is within specification.

- After machining, re-install rotor (if removed) and caliper. Then, **inspect disc brake run-out** by mounting a dial indicator so that it touches the brake disc about 5mm/0.2" inboard of the outer edge. Record the measurement on the repair order sheet. Refer to the applicable vehicle shop manual for run-out tolerance.
- When re-installing the wheels, tighten lug nuts in a star pattern. Tighten to the correct torque specification using a torque stick.

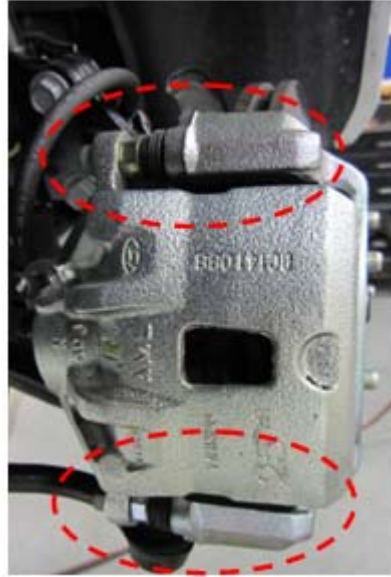
## BRAKE CALIPER SERVICE BEST PRACTICES

**IMPORTANT:** It is recommended to always clean and re-grease the caliper sliding pins for every brake service.

**CAUTION:** Do not apply grease onto the friction surfaces of the brake pads.

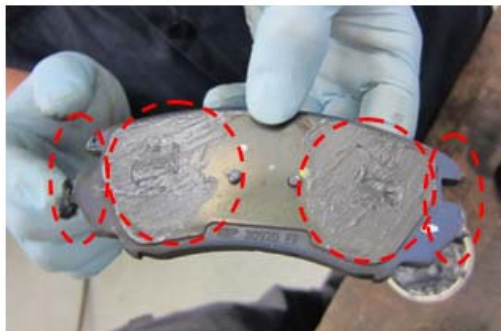
1. When performing a brake service, always remove, clean, and re-apply grease to the slide pins.

**NOTE:** This procedure does not apply to vehicles equipped with fixed-type calipers (eg. BK Genesis Coupe Track, BH Genesis V8, etc.)



2. When performing a brake service, always clean and re-apply grease to the brake pad backing plates and ears (where contact is made with the caliper).

**CAUTION:** Do not apply grease onto the friction surfaces of the brake pads.





# HYUNDAI Technical Service Bulletin

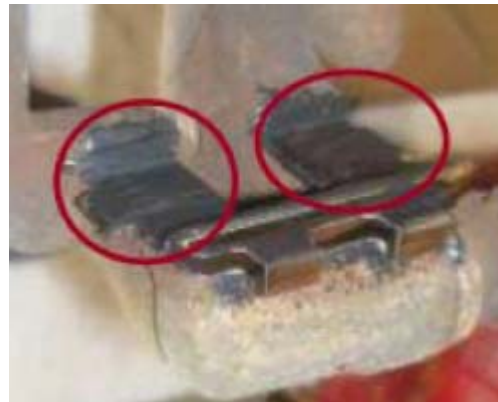
Group

BRAKES

Number

10-BR-001

3. If corrosion is found on the brake caliper, remove the pad retainer and clean the contact surface of the caliper carrier with a wire brush. Apply grease to the carrier surface before re-installing the pad retainer. Apply grease to the pad retainer surface as well.



4. When removing and re-installing brake pads, be sure to install the pad with the wear indicator on the inside, as shown.



5. After completing the brake service, check the rotor for grease or other contamination. Clean with brake cleaner if necessary.





# HYUNDAI Technical Service Bulletin

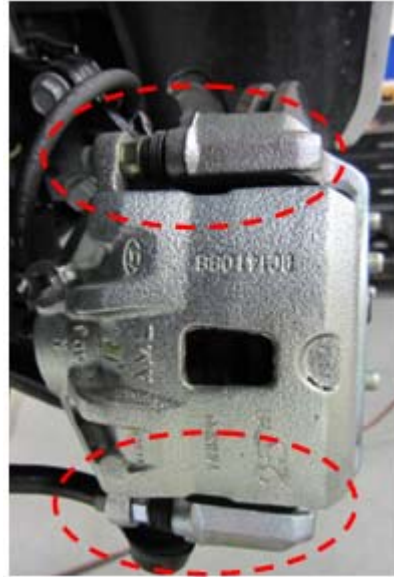
Group

BRAKES

Number

10-BR-001

6. Be certain to tighten all caliper bolts (ie. sliding pin bolts, caliper mounting bracket bolts) to the correct torque specification, as found in the appropriate model service manual.



7. Test and check for abnormal brake pedal sponginess. If any is felt, bleed the brake lines according to the appropriate model service manual.

## WARRANTY INFORMATION:

Normal warranty applies.