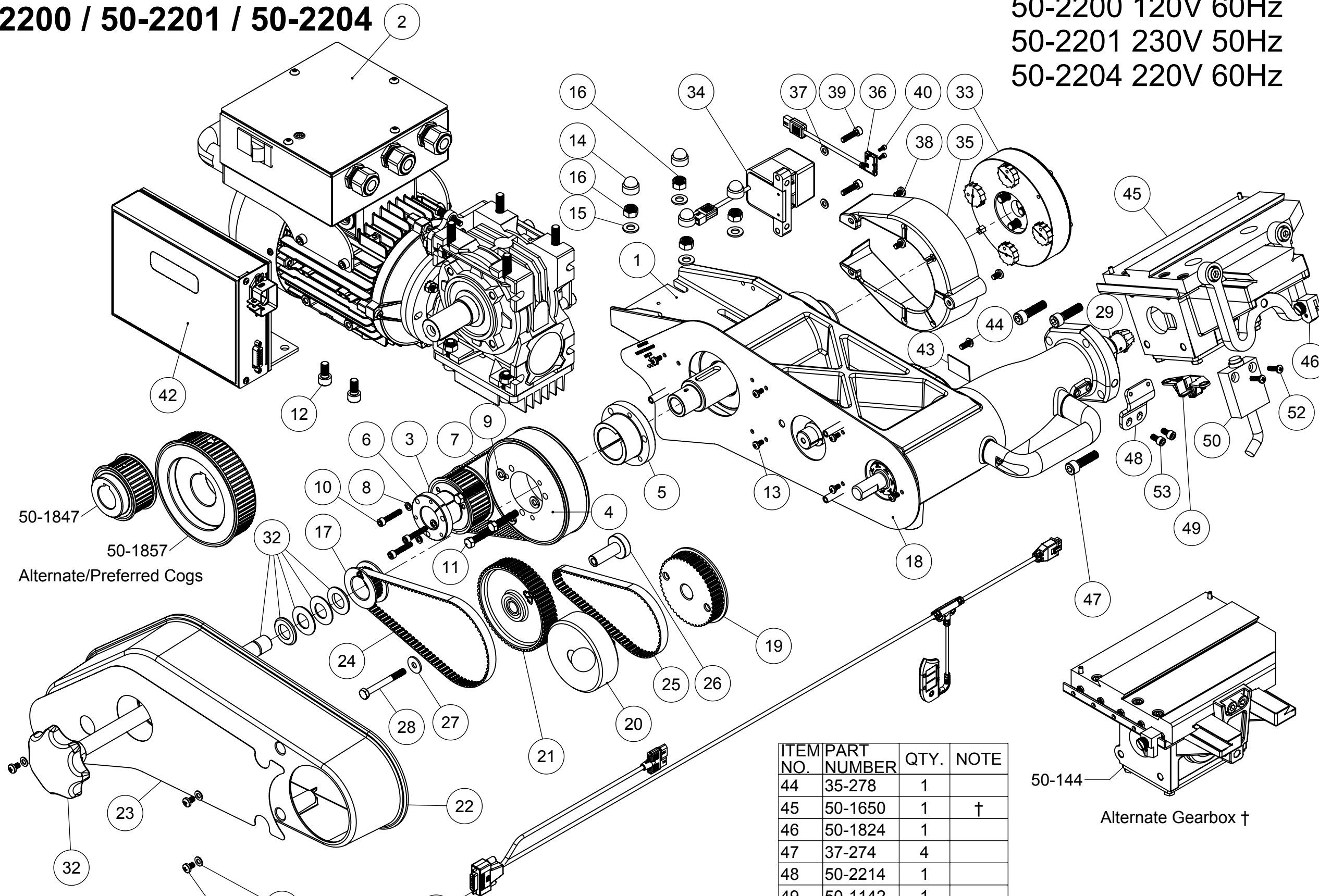


50-2200 / 50-2201 / 50-2204

50-2200 120V 60Hz
50-2201 230V 50Hz
50-2204 220V 60Hz

ITEM NO.	PART NUMBER	QTY.	NOTE
1	50-2201	1	*
2	50-2221	1	†*
3	50-1845	1	
4	50-1846	1	
5	37-1854	1	
6	37-1805	1	±
7	37-1845	1	
8	37-156	3	
9	37-157	3	
10	35-800	3	
11	35-838	3	
12	35-414	2	
13	35-280	6	
14	36-010	4	
15	37-003	4	
16	36-002	4	
17	50-1831	1	
18	50-2218	1	
19	50-566	1	
20	50-570	1	
21	50-565	1	
22	50-2242	1	
23	50-861	1	
24	37-1808	1	
25	50-567	1	
26	50-2217	1	
27	37-117	1	
28	35-251	1	
29	50-2220	1	†
30	35-834	3	
31	37-025	3	
32	50-2239	1	±
33	50-2400	1	†
34	50-1840	1	
35	50-2208	1	
36	50-1826	1	
37	37-025	2	
38	35-926	3	
39	35-835	2	
40	50-364	2	
42	50-1184	1	†
43	37-2208	1	



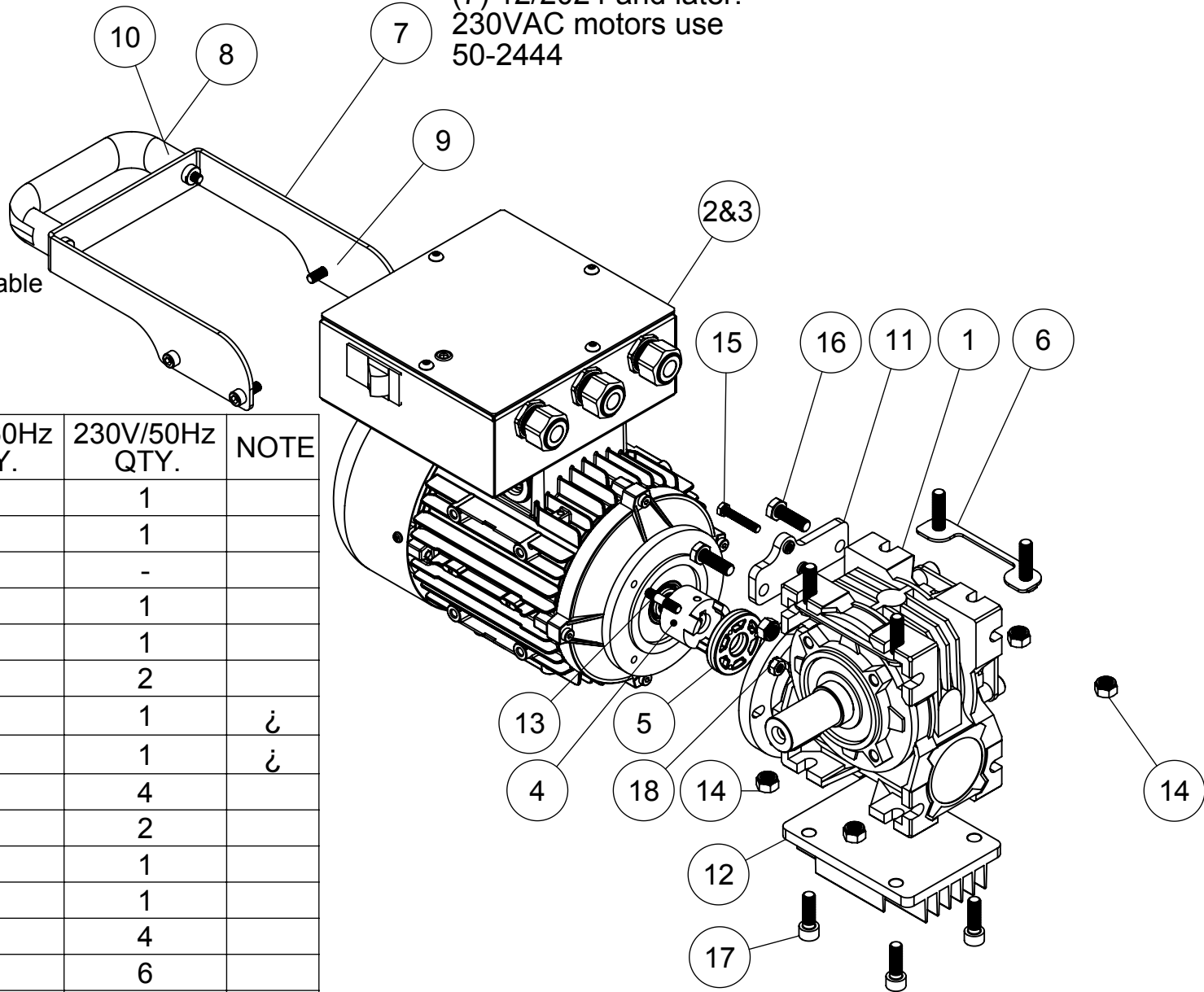
50-1847
50-1857
Alternate/Preferred Cogs

50-144
Alternate Gearbox †

LEGEND:
* Not available for sale
† Assembly diagram available
± Part of larger assembly
± Comes with hardware
‡ Not shown
@ Special Order

ITEM NO.	PART NUMBER	QTY.	NOTE
44	35-278	1	
45	50-1650	1	†
46	50-1824	1	
47	37-274	4	
48	50-2214	1	
49	50-1142	1	
50	50-560	1	
51	50-2211	1	
52	35-281	2	
53	35-811	2	
54	50-2223	1	

(7) 12/2024 and later:
230VAC motors use
50-2444

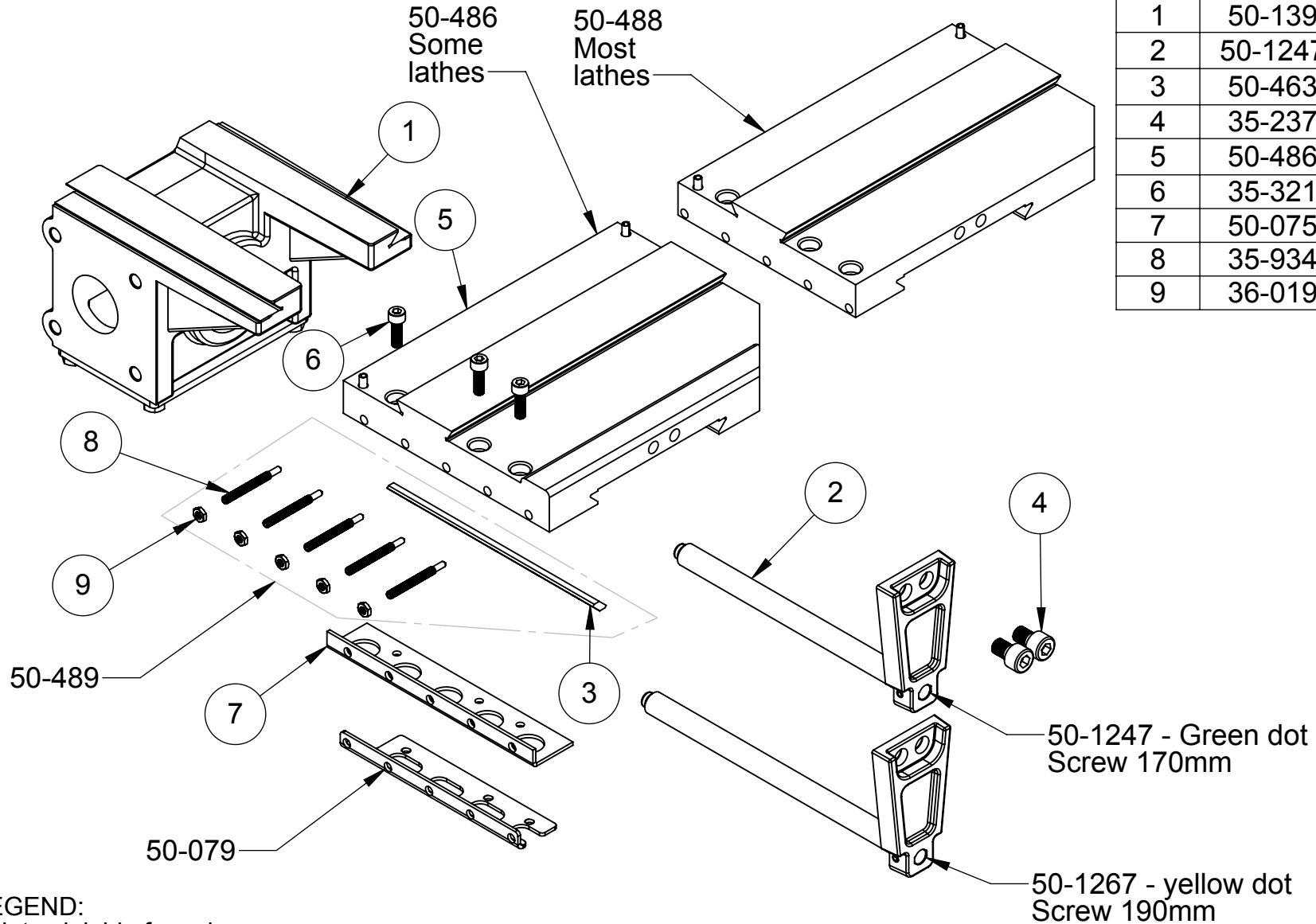


LEGEND:
 * Not available for sale
 † Assembly diagram available
 ± Part of larger assembly
 ¿ Comes with hardware
 ‡ Not shown
 @ Special Order

ITEM NO.	PART NUMBER	120V/60Hz QTY.	230V/50Hz QTY.	NOTE
1	37-2200	1	1	
2	50-1528	-	1	
3	50-1526	1	-	
4	50-2260	1	1	
5	50-2263	1	1	
6	50-2210	2	2	
7	50-1844	1	1	¿
8	37-813	1	1	¿
9	35-718	4	4	
10	35-229	2	2	
11	50-2207	1	1	
12	50-2209	1	1	
13	35-4057	4	4	
14	36-002	6	6	
15	35-320	1	1	
16	35-317	2	2	
17	35-236	6	6	
18	36-4017	1	1	

On/Off Switches:
 110/120VAC 50/60Hz: 50-548 or 50-549
 230/240VAC 50/60Hz: 50-551

50-144



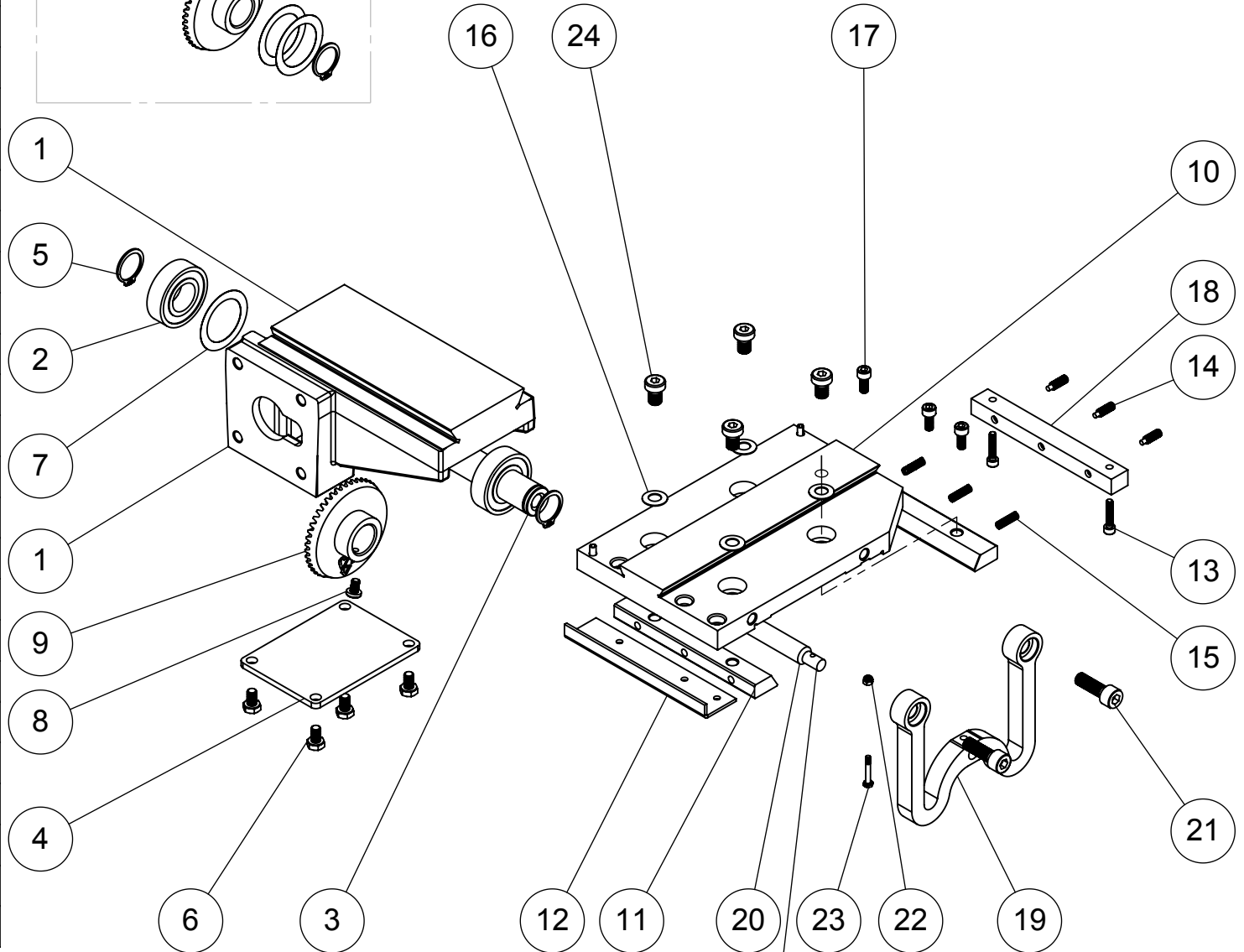
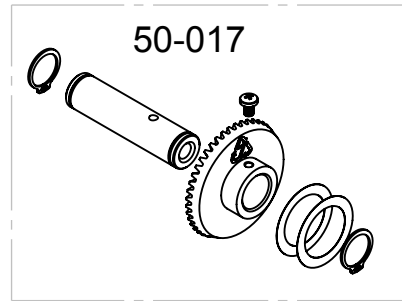
ITEM NO.	PART NUMBER	Qty.	Note
1	50-139	1	
2	50-1247	1	†
3	50-463	1	†
4	35-237	2	
5	50-486	1	†
6	35-321	3	
7	50-075	1	
8	35-934	5	
9	36-019	5	

LEGEND:

- * Not available for sale
- † Assembly diagram available
- ± Part of larger assembly
- ∩ Comes with hardware
- ‡ Not shown
- @ Special Order

50-1650

ITEM NO.	PART NUMBER	QTY.	Note
1	50-1651	1	
2	37-056	2	
3	50-016	1	*±
4	50-1668	1	
5	37-057	2	±
6	35-927	4	
7	50-018	1	±
8	35-926	1	
9	50-021	1	*±
10	50-1658	1	∩
11	50-1657	2	*
12	50-1664	1	
13	35-951	2	
14	50-1208	3	
15	37-1250	3	
16	37-077	4	
17	35-292	3	
18	50-1667	1	*
19	50-1661	1	∩
20	50-070	1	
21	35-236	2	
22	36-015	1	
23	50-1672	1	
24	35-255	4	

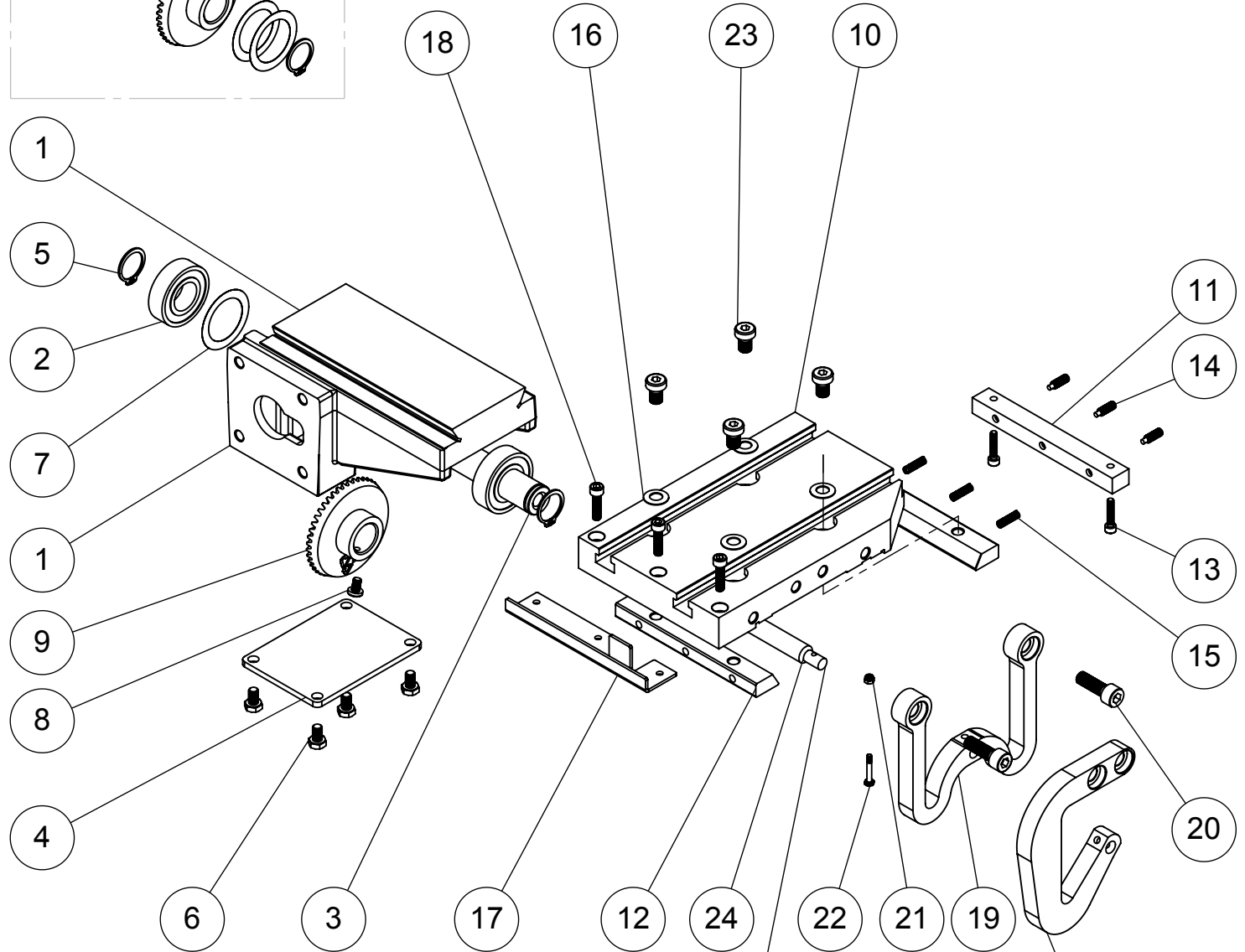
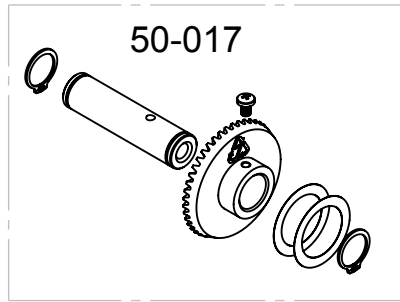


LEGEND:
 * Not available for sale
 † Assembly diagram available
 ± Part of larger assembly
 ∩ Comes with hardware
 ‡ Not shown
 @ Special Order

Primary: 50-070 (blue) 180mm
 Alternate: 50-032 (yellow) 190mm

50-1690

ITEM NO.	PART NUMBER	QTY.	Note
1	50-1651	1	
2	37-056	2	
3	50-016	1	*±
4	50-1668	1	
5	37-057	2	
6	35-927	4	
7	50-018	1	±
8	35-926	1	
9	50-021	1	*±
10	50-1342	1	
11	50-1667	1	*
12	50-1657	2	*
13	35-951	2	
14	50-1208	3	
15	37-1250	3	
16	37-077	4	
17	50-1665	1	
18	35-271	3	
19	50-1661	1	¿
20	35-236	2	
21	36-015	1	
22	50-1672	1	
23	35-255	4	
24	50-070	1	



LEGEND:
 * Not available for sale
 † Assembly diagram available
 ± Part of larger assembly
 ¿ Comes with hardware
 ‡ Not shown
 @ Special Order

Primary: 50-070 (blue) 180mm
 Alternate: 50-032 (yellow) 190mm

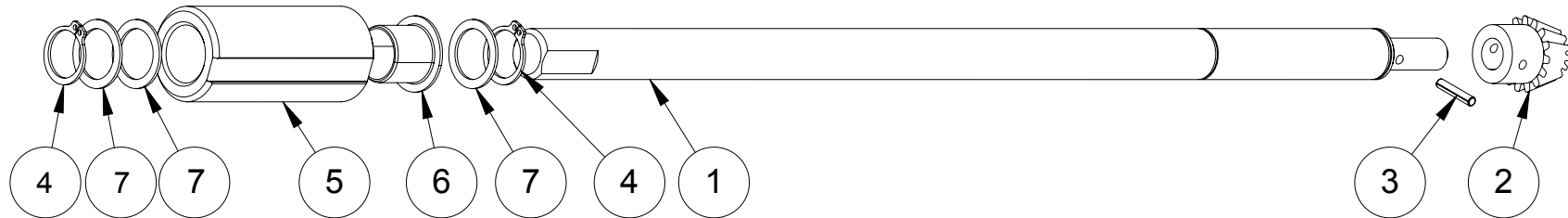
50-1659
 Alternate

ITEM NO.	PART NUMBER	QTY.
1	50-2220.1	1
2	50-022	1
3	37-054	1
4	37-495	2
5	50-649.2	1
6	37-1920	1
7	37-503	3

Only 50-022 available for sale separately.

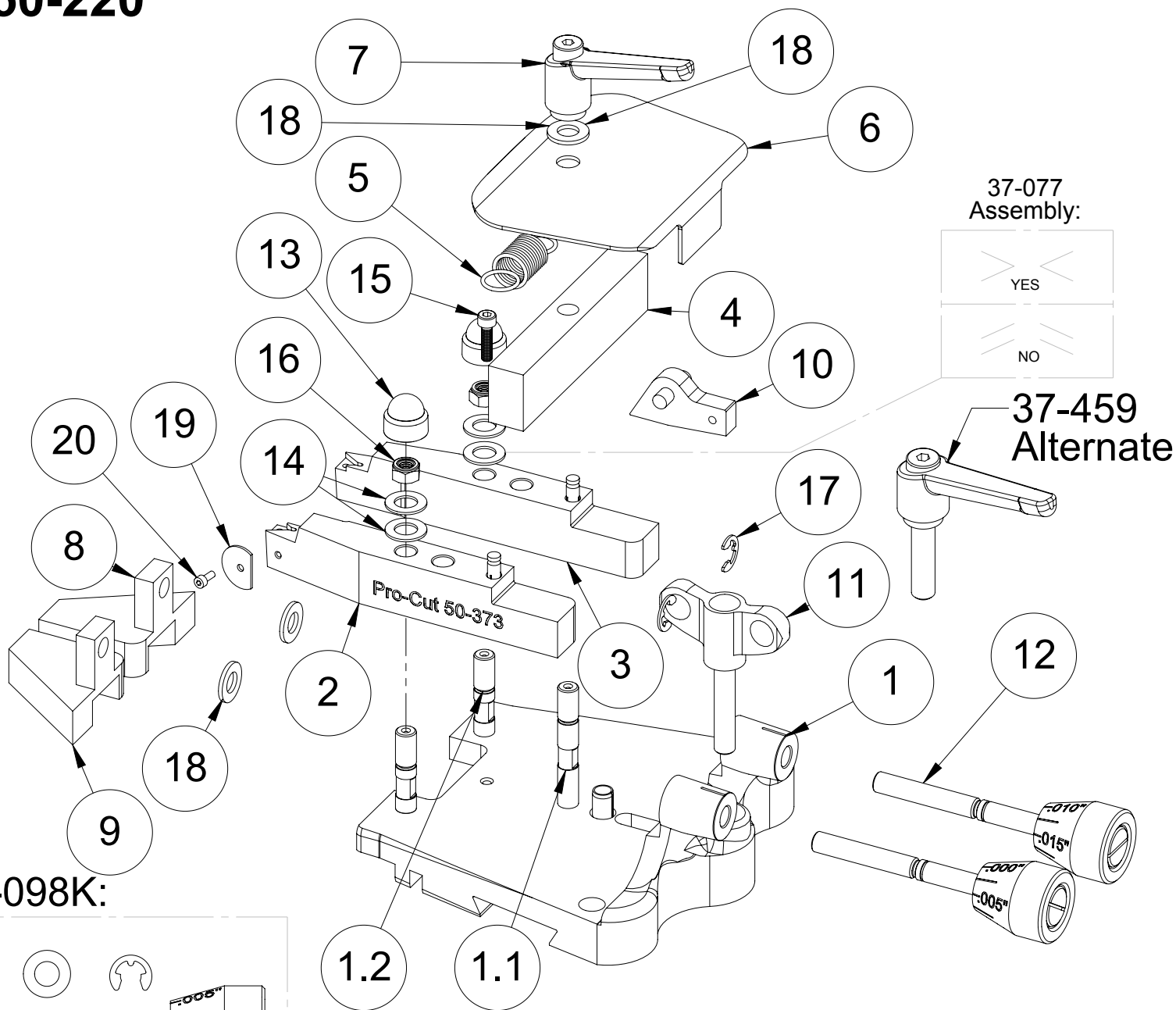
LEGEND:

- * Not available for sale
- † Assembly diagram available
- ± Part of larger assembly
- ¿ Comes with hardware
- ‡ Not shown
- @ Special Order

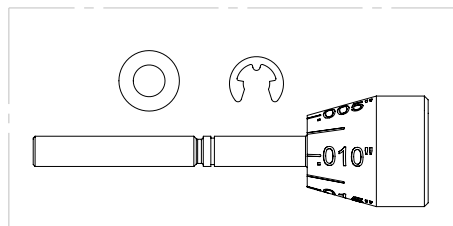


Earlier versions may vary.

ITEM NO.	PART NUMBER	QTY.	NOTE
1	50-293	1	
1.1	50-065	1	
1.2	50-063	2	
2	50-373	1	
3	50-374	1	
4	50-252	1	
5	50-053	1	
6	50-260	1	
7	37-473	1	
8	50-253	1	
9	50-254	1	
10	50-249	1	
11	37-812	1	
12	50-098	2	
13	36-010	2	
14	37-077	4	
15	35-259	1	
16	36-020	2	
17	37-082	2	
18	37-003	3	
19	50-365	1	
20	50-364	1	



50-098K:

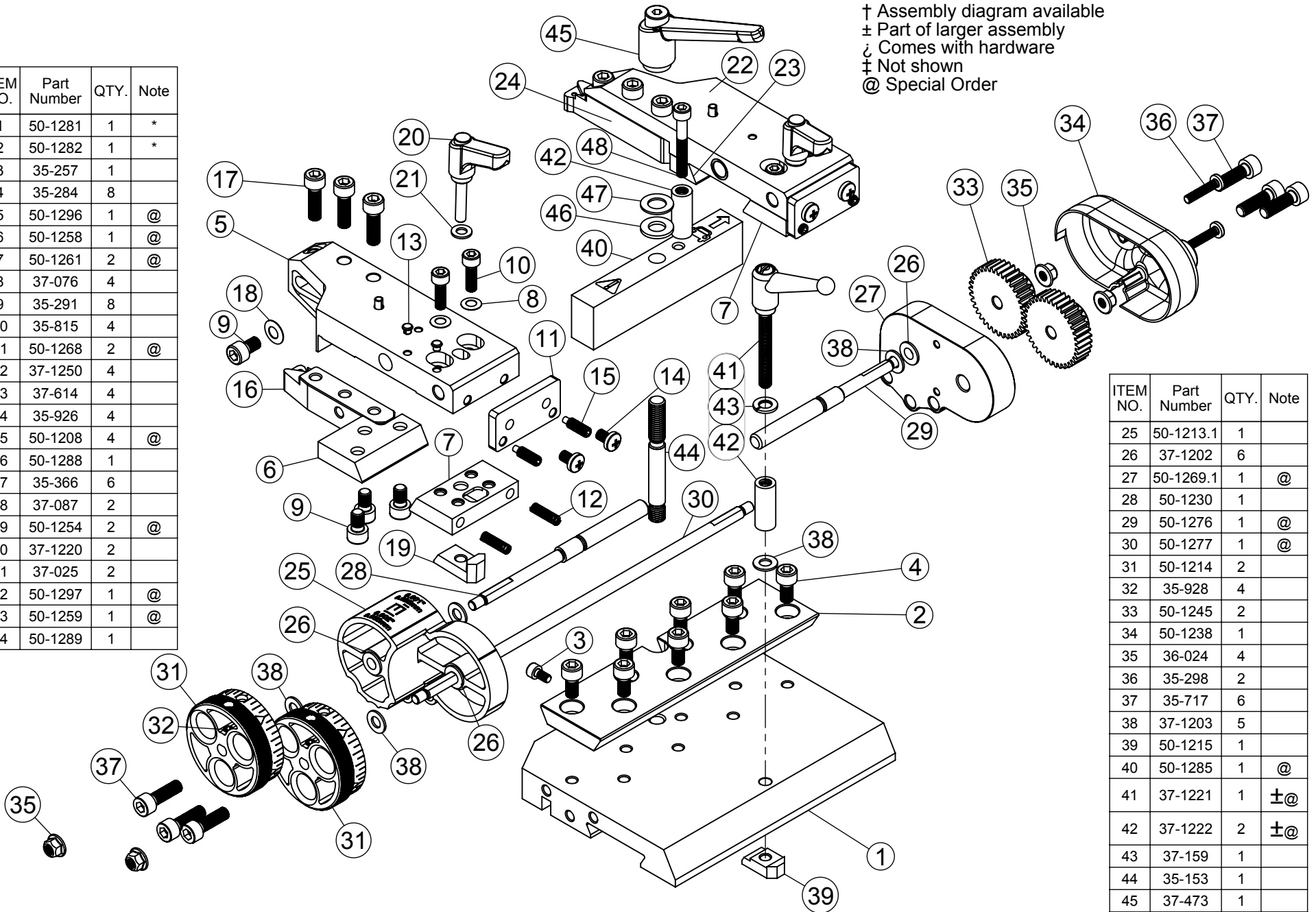


LEGEND:

- * Not available for sale
- † Assembly diagram available
- ± Part of larger assembly
- ⌒ Comes with hardware
- ‡ Not shown
- @ Special Order

LEGEND:
 * Not available for sale
 † Assembly diagram available
 ± Part of larger assembly
 ⌋ Comes with hardware
 ‡ Not shown
 @ Special Order

ITEM NO.	Part Number	QTY.	Note
1	50-1281	1	*
2	50-1282	1	*
3	35-257	1	
4	35-284	8	
5	50-1296	1	@
6	50-1258	1	@
7	50-1261	2	@
8	37-076	4	
9	35-291	8	
10	35-815	4	
11	50-1268	2	@
12	37-1250	4	
13	37-614	4	
14	35-926	4	
15	50-1208	4	@
16	50-1288	1	
17	35-366	6	
18	37-087	2	
19	50-1254	2	@
20	37-1220	2	
21	37-025	2	
22	50-1297	1	@
23	50-1259	1	@
24	50-1289	1	

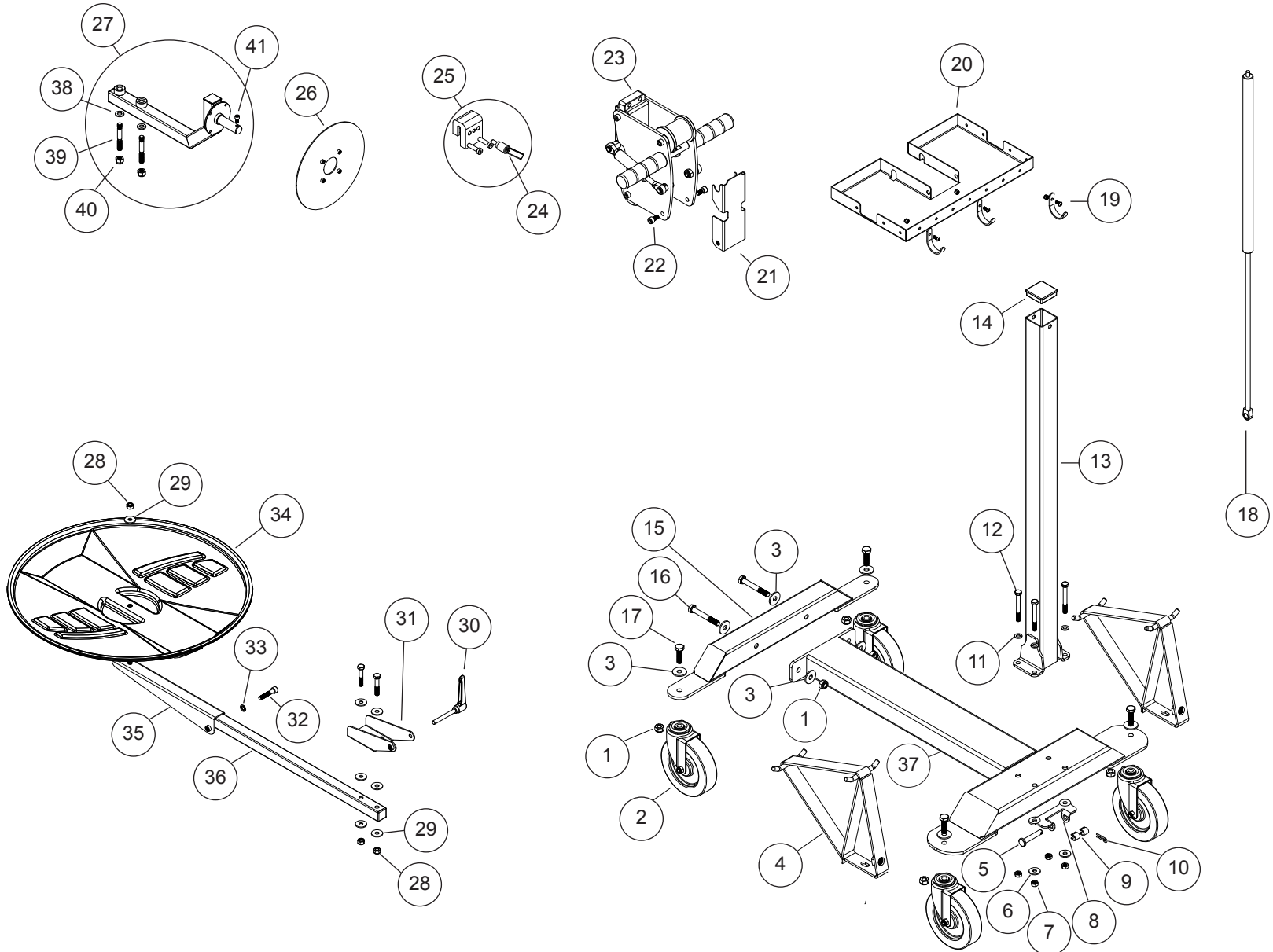


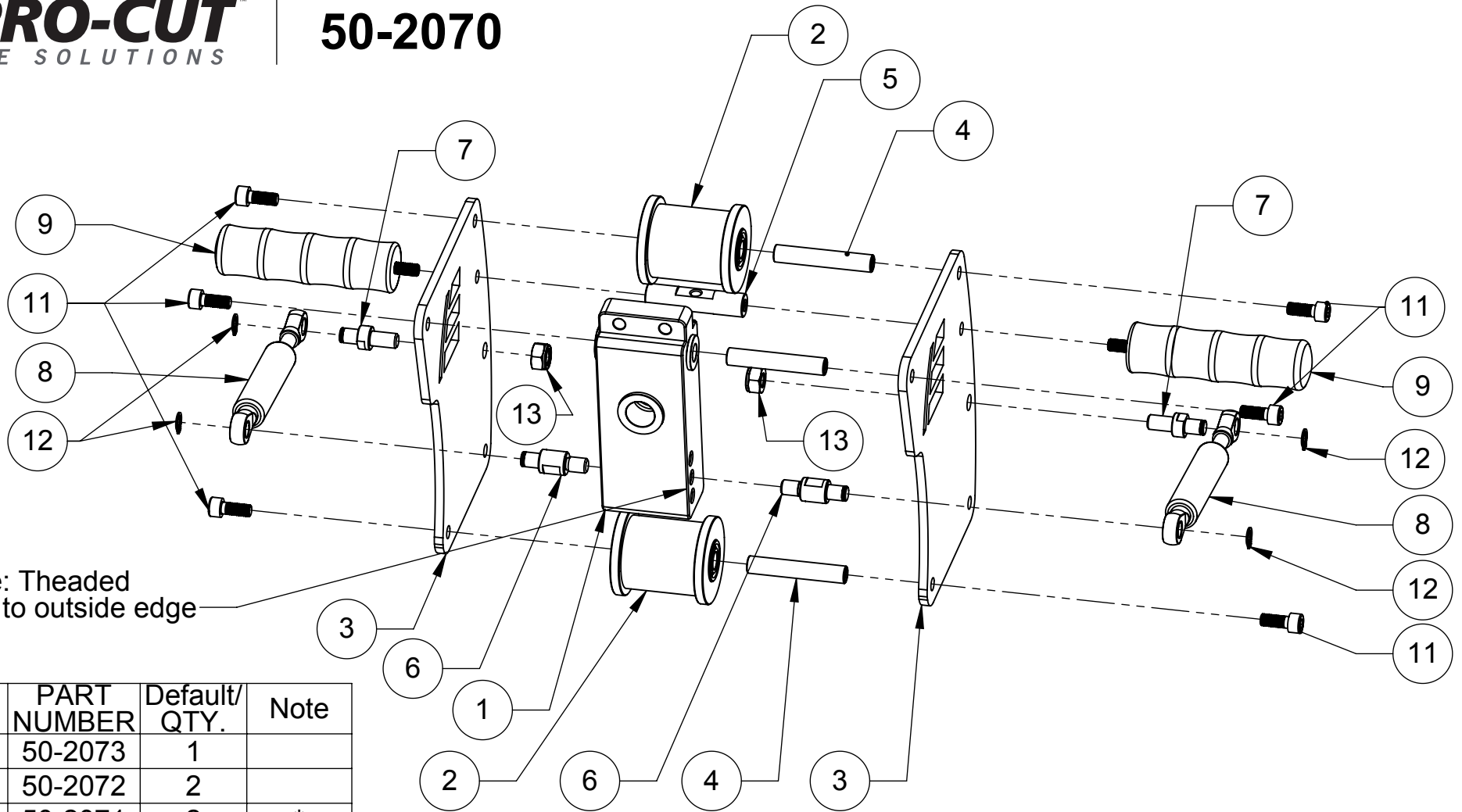
ITEM NO.	Part Number	QTY.	Note
25	50-1213.1	1	
26	37-1202	6	
27	50-1269.1	1	@
28	50-1230	1	
29	50-1276	1	@
30	50-1277	1	@
31	50-1214	2	
32	35-928	4	
33	50-1245	2	
34	50-1238	1	
35	36-024	4	
36	35-298	2	
37	35-717	6	
38	37-1203	5	
39	50-1215	1	
40	50-1285	1	@
41	37-1221	1	±@
42	37-1222	2	±@
43	37-159	1	
44	35-153	1	
45	37-473	1	
46	37-003	1	
47	37-077	1	
48	35-324	1	@

Disassembly of 50-1281 and 50-1282 is not recommended.

LEGEND:
 * Not available for sale
 † Assembly diagram available
 ± Part of larger assembly
 ⚡ Comes with hardware
 ‡ Not shown
 @ Special Order

ITEM	PART	QTY
1	36-001B	6
2	37-038	4
3	37-993	8
4	50-2030	2
5	37-046	1
6	37-110	4
7	36-009	4
8	50-2019	1
9	50-2046	2
10	37-496	1
11	37-003	4
12	35-360	4
13	50-2048	1
14	37-618	1
15	50-2029	1
16	35-998	2
17	35-304	4
18	37-489	1
19	50-2018	3
20	50-2077	1
21	50-2078	1
22	35-414	2
23	50-2070	1
24	37-1065	1
25	50-1065	1
26	50-2034	1
27	50-2235	1
28	36-002	3
29	37-111	7
30	37-484	1
31	50-2041	1
32	35-293	1
33	37-011	1
34	50-2044	1
35	50-2043	1
36	50-2042	1
37	50-2047	1
38	37-108	2
39	35-159	2
40	35-285	1
41	36-001B	1





! Note: Threaded holes to outside edge

ITEM NO.	PART NUMBER	Default/ QTY.	Note
1	50-2073	1	
2	50-2072	2	
3	50-2071	2	*
4	50-2076	3	*
5	50-2016	1	
6	50-2074	2	*
7	50-2075	2	
8	37-485	2	
9	50-1038	2	
10	37-721	2	
11	35-239	6	
12	37-498	4	
13	36-001B	2	

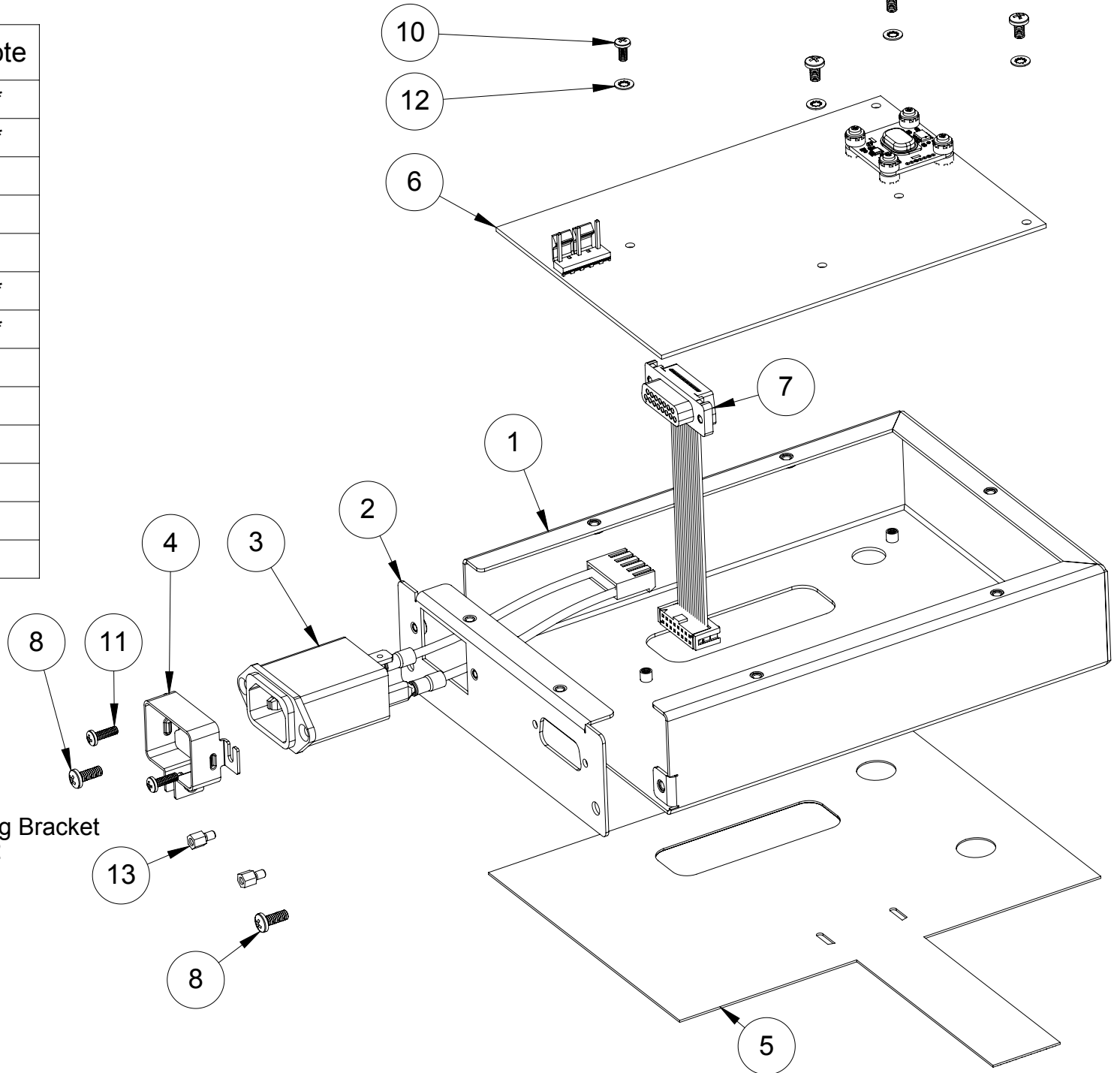
LEGEND:
 * Not available for sale
 † Assembly diagram available
 ± Part of larger assembly
 ∩ Comes with hardware
 ‡ Not shown
 @ Special Order

ITEM NO.	PART NUMBER	QTY.	Note
1	50-1128	1	*
2	50-1125	1	*
3	50-457	1	
4	37-628	1	
5	50-1135	1	
6	50-1154	1	*
7	50-1144	1	*
8	35-806	2	
9	35-311	4	
10	35-803	1	
11	35-802	2	
12	37-016	5	
13	35-418	2	

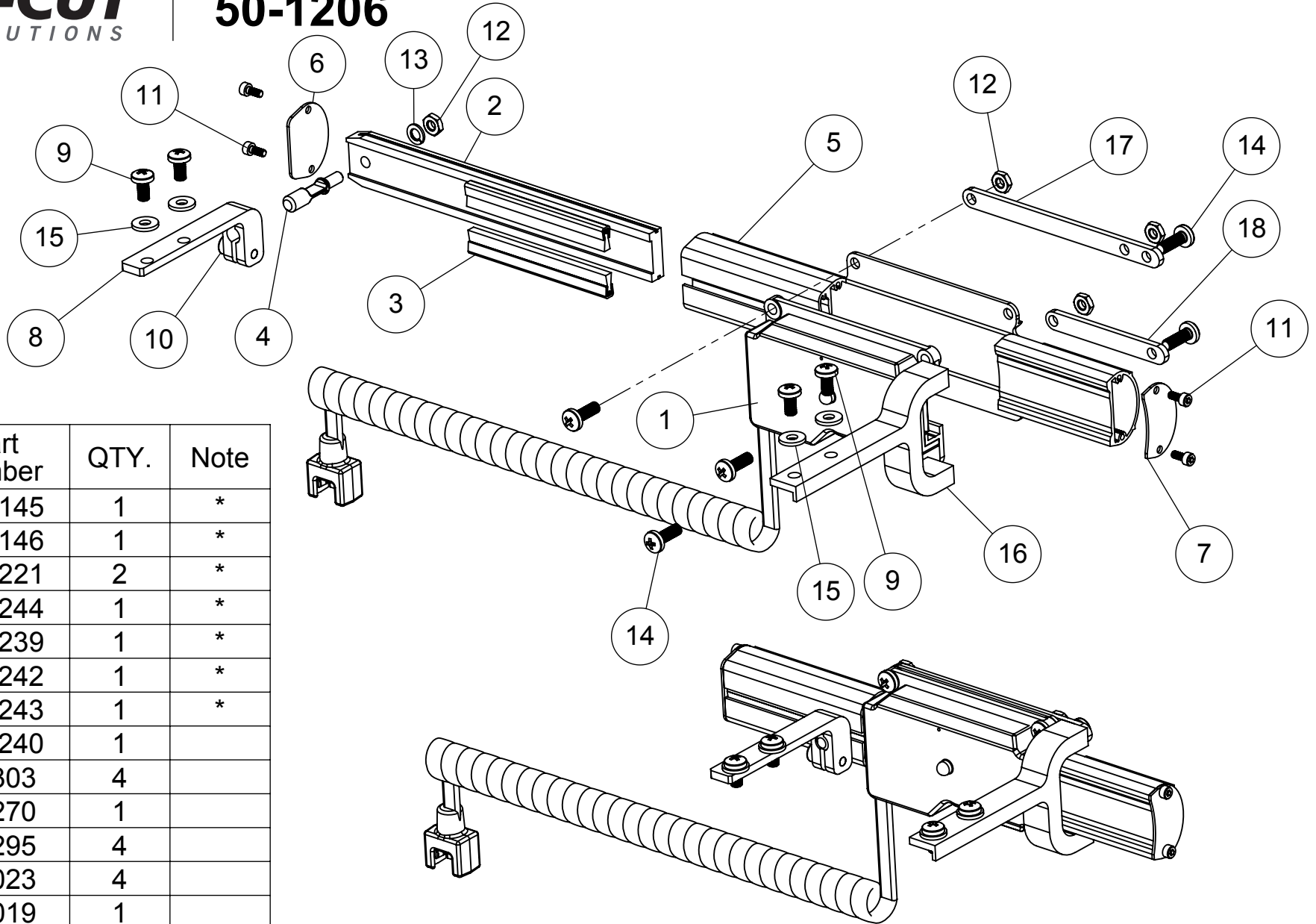
LEGEND:

- * Not available for sale
- † Assembly diagram available
- ± Part of larger assembly
- ⊂ Comes with hardware
- ‡ Not shown
- @ Special Order

Motor Brand | Mounting Bracket
 Leeson | 50-2212
 Elprom (120& 230 VAC) | 50-2222
 Elprom 230VAC only |
 after 12/2024 | 50-2227



50-1206



ITEM NO.	Part Number	QTY.	Note
1	50-1145	1	*
2	50-1146	1	*
3	50-1221	2	*
4	50-1244	1	*
5	50-1239	1	*
6	50-1242	1	*
7	50-1243	1	*
8	50-1240	1	
9	35-303	4	
10	35-270	1	
11	35-295	4	
12	36-023	4	
13	37-019	1	
14	35-322	5	
15	37-1206	4	
16	50-1225	1	±
17	50-1226	1	±
18	50-1227	1	±

LEGEND:

- * Not available for sale
- † Assembly diagram available
- ± Part of larger assembly
- ⌘ Comes with hardware
- ‡ Not shown
- @ Special Order