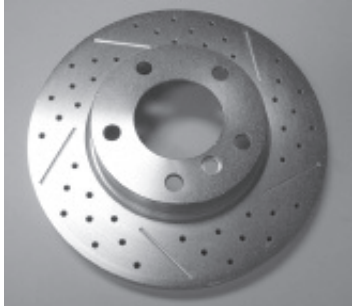


- MODELS:**
- PFM 9.2
  - PFM 9.0
  - PFM900
  - VBG620

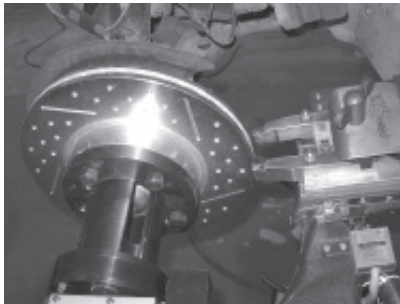


## ● **CUTTING DRILLED AND SLOTTED ROTORS with the Pro-Cut On-Car Brake Lathe**

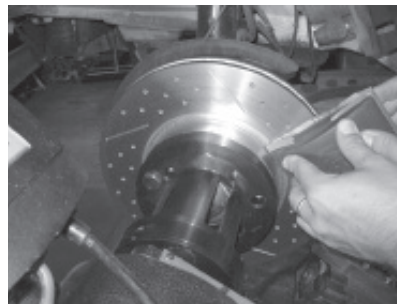


1. Set up the Pro-cut lathe as usual.
2. Remove excessive rust on rotor surface.
3. Inspect the cutting head and cutting tips previous to cutting rotors.
4. The cutting arms must be perfectly aligned / opposed.
5. The gib must be properly adjusted, contact service department for proper procedure.
6. The rotor must be perfectly centered between the cutting arms.
7. Depth of cut should be .003" per side.
8. Use a 50-754 thick silencer for solid rotors.
9. Upon cutting rotors, sand for 1 minute per side with 150 grit sand paper and wash down with soap and water.

**Contact the Pro-Cut Service Department with any questions: 800-543-6618.**



The rotor must be perfectly centered between the cutting arms. Depth of cut should be .003" per side.



Upon cutting rotors, sand for 1 minute per side with 150 grit sandpaper and wash down with soap and water.

