



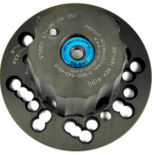
**50-687**  
**4-Lug Adapter**  
 Fits most small cars with 4-lug patterns such as Hyundai Elantra and Toyota Yaris.



**50-688**  
**5-Lug Adapter**  
 Fits most mid-sized cars with 5-lug patterns such as Toyota Camry, Honda Accord, Chevy Malibu.



**50-695**  
**5 & 6 Small Truck / Large Car Adapter**  
 Fits many smaller trucks and SUV's such as the Dakota and Envoy, and larger cars such as the Chrysler 300 and Buick LeSabre.



**50-691**  
**1/2 Ton Truck Adapter**  
 Fits most pickups and SUV's in the 1/2-ton range including older Ford F150.



**50-681**  
**Toyota & Import Truck Adapter**  
 Fits most pickups and SUV's including the Toyota Land Cruiser / VW Touareg, and single-wheel Dodge / MB Sprinter. Also fits many domestic pickups, excluding Ford.



**50-694**  
**1/2 Ton Truck Adapter with F150**  
 Has many 1/2-ton truck and SUV patterns such as the newer Ford F150 and GM Acadia.



**50-683**  
**HD Truck Adapter**  
 Fits 3/4 and 1-ton applications with 8 or 10-lug patterns such as GM 2500HD and Ford F350.



**50-935**  
**Dual Wheel Truck Adapter**  
 Fits most dual-wheel trucks front and rear. Some DW trucks require use of additional extensions, stud extensions, and / or an Extended Feed Screw (50-035).



**50-946**  
**Light Duty 6 Lug Adapter**  
 6 lug adapter fits newer Colorado/Canyon, some Cadillac, and 6 lug single rear wheel Sprinters.



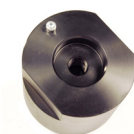
**50-246**  
**Small Spacer Ring**  
 Spacer for use with the 50-687 / 50-688 adapter.



**30-791**  
**Larger Spacer Ring**  
 Large spacer for use with the 50-691 adapter.



**50-046**  
**Standard Nose Cone Extension**  
 For use when cutting head gear box interferes with rotor.



**50-049**  
**Double-thick Nose Cone Extension**  
 Used where high offset is required either because of lathe / brake rotor interference, or where a lift interferes with the trolley.



**50-179**  
**Nut and Bolt Kit**  
 Includes 5 nuts each of 1/2"x20, 12mmx1.25, 12mmx1.25, 9/16x18, 14mmx1.5, and 5 Studs. Also includes centering tubes. Comes with a well-labeled organizational box.



**50-660**  
**Tool Box**  
 All the tools to use any Pro-Cut model. Includes 6mm T-handle, 2.0mm allen for gib adjustment and tip screws, 5mm allen for adjusting tool arms, chip brush, indexing crayon, and 6mm / 8mm wrench.



**50-703**  
**Standard Silencer / Chip Deflector**  
 For use on standard size vented rotors. Custom-cut to ride securely over the Pro-Cut cutting arms.



**50-744**  
**Truck Silencer for Large/Thick Rotors**  
 For use on larger vented rotors up through medium duty trucks. Custom-cut to ride securely over the Pro-Cut cutting arms.



**50-754**  
**Double-thick Disc Silencer**  
 For thin, solid rear rotors. Provides increased vibration dampening.



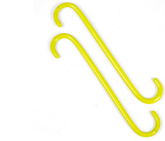
**50-742**  
**Cutting Tips**  
 Premium quality carbide cutting tip offers custom geometry, chip breaker, and positive relief. Engineered to allow cut depths...../side. of up to 0.020" / side. Includes 5 pairs of tips with screws.



## 50-ACC

### Lathe Accessory Kit

Operational accessory kit for any Pro-Cut lathe. Includes: 1 box of 50-742 cutting tips, 50-703, 50-744, and 50-754 silencers, 50-179 lug nut kit, large & small spacer rings, standard nose cone extension, Brake Spec guide, caliper S hooks, and a lathe cover.



## 37-034K

### S-Hooks (2)

With these sturdy hooks there's no need for mechanics wire or bungee cords to hang brake calipers.



## 50-752

### Lathe Cover

Protects your investment against shop dust, debris, and moisture.



## 30-687

### Studs for Fiat / Dodge

Studs for late model Fiat 500 and Dodge Dart and 200 models. Requires M12 X 1.25 lug nuts from 50-179 kit.



## 50-743

### PCBN Cutting Tips

Polycrystalline cubic boron nitride is the second hardest material in the world and gives a superior mirror like rotor finish! Includes one pair of tips with screws."



## 50-174

### Flat Rate Speed Nut Kit w/Holster

Speed nut kit allows the use of a 12V or less impact gun to install adapters. Drastically reduces adapter installation time! Comes with holster that attaches to 50-2092 & 50-2093 trolleys.



## 37-996

### Hub Cleaning Tool

For cleaning hub face and inside and out of rotor. Cleaning improves accuracy and should be done every time.



## 50-376

### Slide Oil

Keep your lathe's gib ways running smoother for longer with this special slide oil. Works great for all Pro-Cut lathes!



## 37-1900

### Pro-Cut Safety Glasses

Match-machining brake rotors to the hub needs to always start with safety first! Safety glasses should always be worn when using a Pro-Cut lathe.



## 50-492K

**Ford E&F 350/450/550 Reach Ext. Kit**  
Allows lathe to reach rear rotors of Ford E&F series 350/450/550. For lathes with Speed-Lock (50-220) cutting head only. Includes: 50-492 reach plate & 50-005, 50-007, & 50-009 stud extensions.



## 50-1492K

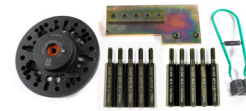
**Ford E&F 350/450/550 Reach Ext. Kit**  
Allows lathe to reach rear rotors of Ford E&F series 350/450/550. For lathes with Speed-Lock cutting head (50-220) or G2X style cutting heads (50-1200 or 50-1250). Includes: 50-1492 reach plate & 50-005, 50-007, & 50-009 stud extensions.



## 50-492FT

### Full Dual Wheel Kit/Speed-Lock

For domestic 1 ton dual wheel pick-up chassis trucks 2002 and newer. Includes: 50-492 reach plate, 50-935 adapter, 50-744 silencer, & 50-005 & 50-007 stud extensions.



## 50-1492FT

### Full Dual Wheel Kit/G2X

For domestic 1 ton dual wheel pick-up chassis trucks 2002 and newer. Includes: 50-1492 reach plate, 50-935 adapter, 50-744 silencer, & 50-005 & 50-007 stud extensions.



## 50-006

### GM Hexagonal Stud Extensions

For rear of some 3500 HD GM trucks: 5/8"x18 - 5 per set.



## 50-1011

### Dodge ProMaster Stand Offs

Stand offs for late model Dodge full size ProMaster. Requires 50-681 adapter and M14 lug nuts from the 50-179 kit.



## 50-185KIT

### Mitsubishi Box Truck Rr. Stud Ext. Kit

Includes 3 x 50-185L left-hand thread extensions in blue, 3 x 50-185R right-hand thread extensions in red, and 3 x 35-185 adapter pilot bolts. Use with 50-935R5 adapter.



## 50-TRANSIT

### Ford Transit Adapter Kit

Fits full size Ford Transit single and dual wheel models. Includes: 50-696 adapter, 50-934 adapter, & 50-962 spacers.



## 50-999KIT

### Medium-Duty Dual-Wheel Truck Adp.

Has 8 on 275mm pattern and 10 on 11.25" pattern. Fits most medium duty trucks and buses. Complete kit for front & rear with adapters, reach plate, spacers, & nuts.